

# ALPES

INDUSTRIES SERVICES INTERNATIONAL LTD



## SUPPLY AND MANUFACTURE PROCESSING EQUIPMENTS AND SERVICES FOR BEVERAGE AND DAIRY INDUSTRIES.

This know-how starts from plant study and conception, all the way to plant installation and start-up of the production including training of operators and maintenance engineers. Alpes Industries Services International offers equipment and services for expansion or renovation of existing plant.



### *Process system and engineering :*

Alpes Industries Services International is equipped with advanced 2D and 3D modeling systems in CAD for plant process design. Our plant design is based on the latest international standards and recommendations for hygienic design. Our expert staff manages to generate:

- ◆ Flow sheet and PID,
- ◆ Equipment specifications and design, BOQ, spare parts requirement, planning,
- ◆ Utilities required (electricity, steam, compressed air, water, waste water treatment),
- ◆ Plant lay out and building recommendation,
- ◆ CIP program, pasteurizer and sterilizer program for PLC and display screen,
- ◆ Etc...

### *Project management...*

Alpes Industries Services International has developed and refined the necessary expertise to ensure that projects are completed to specification, on time and to budget. This approach leaves you free to concentrate on your business while we take good care of your project.

We assemble a multi-disciplined team, drawing on skills from across our world-wide group of engineers to suit the particular project and technology involved.

We coordinate your project with the latest project software such Microsoft project, Solid Works, AutoCAD, Step 7.



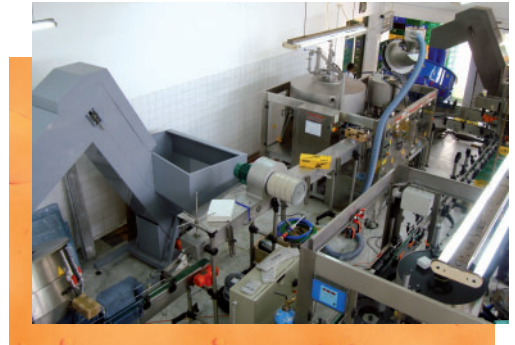
## *Installation :*

We have many experts from all over the world for installation and assembling of process plant, such as piping engineers, process engineers, TIG pipe fitters, TIG welders, frigorist, electricians and automation technicians. Our processing piping is built with Alfa Laval sanitary products.



## *Commissioning :*

Once the Alpes engineering, manufacturing and mechanical installation is done, our commissioning team starts the assembled processing lines, set the different parameters, adjust our PLC... Our team will conduct acceptance electrical, mechanical and production test in accordance with our customer request.



## *Training :*

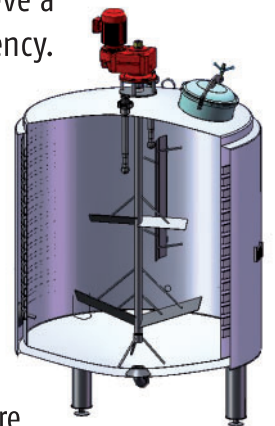
Alpes Industries Services International provides technical training on site to operator and maintenance team. The aim is always to provide you with the knowledge you need to achieve a smooth and efficient start-up and the necessary skills to ensure long term efficiency.

## *Documentation :*

We supply perfect technical handbooks, user manuals and catalogs of all supplied equipment. Technical books are of full information about the process of the plant, maintenance of the equipments, spare part list, consumables, drawings and other related information. The technical books are very user friendly.

## *After sale service and spare parts :*

Alpes Industries Services International has permanent staff of specialist to ensure a proper after sale service to our client. We always keep the record of equipment supplied to our clients in a huge data bank. In our data base, we keep all the information about equipments supplied to our client such: type of machine, serial number, brand name, parts references, technical information.... With the help of this data base we can assist our client easily without wasting time. We are able to supply parts and consumables for equipment supplied by Alpes or other suppliers.





### *Storage tanks :*

Full range of vertical or horizontal tanks [single wall or insulated] for water, juice or milk storage. Direct expansion cooling tanks : Horizontal or vertical cooling tank by direct expansion specially designs for milk.

### *Processing tanks :*

Dairy processing tanks for stirred yoghurt, drinking yoghurt, cream,... Sugar syrup preparation tanks, juice mixing tanks... Tanks supplied: insulated, jacketed, various type of agitator steam heating, ice water cooling...

### *CIP system :*

Fully automatic CIP system single or multi lines. PLC system Siemens Step 7, display screen, fully automatic. Specially design for water saving and to be environmental friendly.



### *Plate heat exchanger, pasteurizer and sterilizer :*

Full range of plate heat exchanger for various liquid products such sugar syrup, juice, milk, drinking yoghurt....Our products are from Alfa Laval and include exchanger type Basic line or Front line. Pasteurizer complete fully automatic for juice and milk from 500 to 20.000 lts/hr specially design to your products. Plate or tubular UHT sterilizer complete and fully automatic for juice and milk from 2.000 to 10.000 lts/hr.

### *Separator :*

Hermetic and self cleaning separator for milk application : milk cleaning, milk standardization, cream separation. Range of product from 500 to 20.000 lts/hr.

### *Homogenizer:*

Specially design for milk. Range of product from 200 to 20.000 lts/hr; working pressure up to 250 bars, single or double stage.



**Water treatment :**

Complete range of products and services starting from water analyses to design appropriate water treatment systems. Our range of equipment includes : pouch filters, sand and activated carbon filters, and cartridge filters, reverse osmoses, UV sterilizer and ozonator.

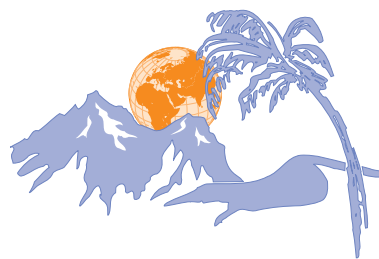
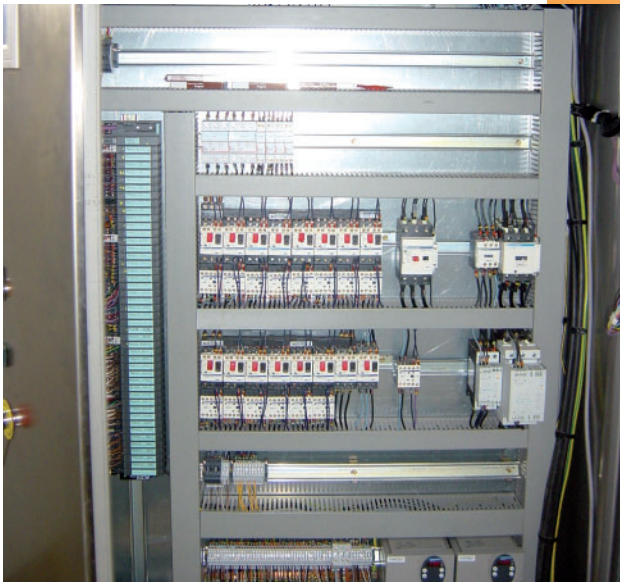
**Stainless steel process piping :**

Design and installation of stainless steel process piping made in stainless steel AISI304 and AISI 316. Supply of pumps, pipes, fitting, valves...

**Utilities :**

Design, supply and installation of the various utilities equipment required for dairy processing and juice processing.

- Steam boiler from 200 kg up to 5.000 kg per hour including piping network, insulation and cladding.
- Ice water production unit including piping network, insulation and cladding.
- Compressed air with air dryer, air filters, tanks and air pipes.
- MCC electrical cabinet and electrical networks.



**ALPES**

INDUSTRIES SERVICES INTERNATIONAL LTD

[www.alpes-is.com](http://www.alpes-is.com) - Email : [ais@alpes-is.com](mailto:ais@alpes-is.com)